

UNIVERSITY OF ILLINOIS
AT URBANA-CHAMPAIGN

The Geography of IT at Illinois

Chuck Thompson
Asst. Dean for Information Services, College of Engineering

IT Pro Orientation - September 22, 2009



Where Do You Work?

Earnings Statement

<https://nessie.uhr.uillinois.edu/cf/EarnStnt/PrintEarnings.cfm?do=4562...>

University of Illinois
Chicago - Springfield - Urbana-Champaign

This serves as the official notification of employee earnings and deductions. Questions should be referred by email to paying@uillinois.edu or phone at 866-476-3586.

UIN: [REDACTED]

Payee:

Charles Thompson

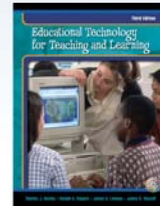
Current Earning

Pay Date	Pay Period	Net Amount	Check Number	Check Amount
08/14/2009	07/16/2009 to 08/15/2009	[REDACTED]		



illinois.edu

“I’m From (Near) Chicago”



illinois.edu

The World View



illinois.edu

- “Modern” higher education dates back to 11th – 13th centuries.
- Harvard generally acknowledged as oldest US institution, founded in 1636.
- Higher education is experiencing growth world wide

The National View



illinois.edu

- Morrill Land-Grant Acts of 1862 and 1890
 - "donate Public Lands to the several States and Territories which may provide Colleges for the Benefit of Agriculture and Mechanic Arts."
 - Triggered major growth in number of universities. Between 1870 and 1897, number reached 821, up from 23 in 1800.
- GI Bill caused major spike in college enrollments in late 1940's
- NSF formed in 1950 fueling growth in science, engineering research
- Higher Education Act of 1965 (reauthorized 7 times since, most recently in 2008) major source of financial aid for students
- As of 2007-2008, ACE reports 4352 higher education institutions in the US, 22.1% more than 20 years earlier
- The Chronicle of Higher Education, <http://chronicle.com/>
- Inside Higher Ed, <http://www.insidehighered.com/>

The Regional View



illinois.edu

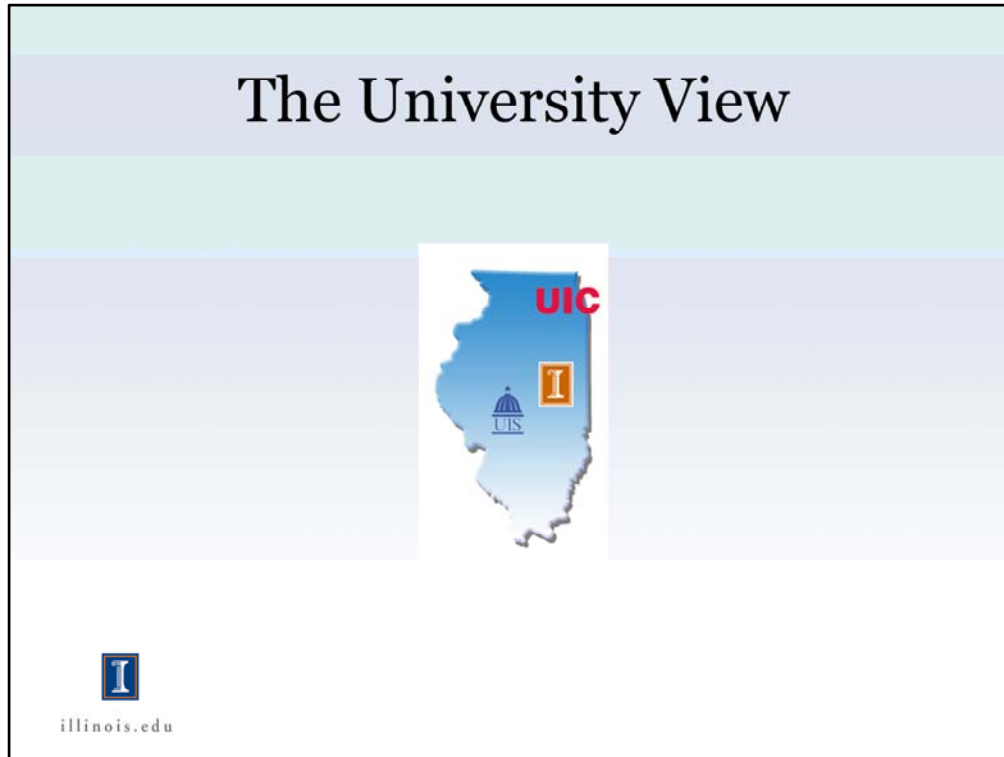
- The Big Ten is the oldest conference and it is more than just athletics.
- CIC, formed in 1957, is a consortium of the Big Ten schools plus University of Chicago (and also includes UIC)
- Big Ten schools founding (* indicates land grant school)
 - Illinois* – 1867
 - Indiana – 1820
 - Iowa – 1847
 - Michigan – 1817
 - Michigan State* – 1855
 - Minnesota* – 1851
 - Northwestern – 1851
 - Ohio State* – 1870
 - Penn State* – 1855
 - Purdue* – 1869
 - Wisconsin* - 1848

The State View



illinois.edu

- The budget of the state impacts the budget of the university.
- The location of campus within the state impacts the university's interactions with companies, media, potential faculty, students, etc.
- As a state institution, state laws impact us (e.g. ethics, purchasing, FOIA)



- The University of Illinois is a multi-campus system, though not as large as many other states have.
- The three campuses have different personalities, missions, and histories
- Campus founding dates:
 - UIUC – 1867
 - UIC – 1965 as a campus; health colleges affiliated with University since 1896-97
 - UIS – 1995 as UIS; 1969 as Sangamon State
- Board of Trustees, with Governor as ex-officio member, is governing body for the University
- President is chief executive officer of the University
- Each campus has a Chancellor who serves as the chief executive officer for their campus
 - The Chancellor positions only date back to 1965 when the creation of UIC added a second campus
- University Administration serves all three campuses. System level functions includes much of the business/financial, legal, and auditing activities
- The Foundation and Alumni Association both serve all campuses. They are both technically independent organizations, not part of the University, but they have close working relationships with the University including MOUs defining their status.

The Campus View



illinois.edu

- The Chancellor is the chief executive officer and highest ranking campus official.
- The Provost and Vice Chancellor for Academic Affairs is the chief academic officer and chief budget officer for campus. The Provost is the second highest ranking campus official.
- There are four additional Vice Chancellors:
 - VC for Institutional Advancement
 - VC for Student Affairs
 - VC for Research
 - VC for Public Engagement
- Most campus units report through one of the VCs but there are a number that report directly to the Chancellor including:
 - Athletics
 - Facilities and Services
 - Public Affairs
 - Public Safety
- The Deans are the heads of the colleges and schools and report to the Provost. The Council of Deans is the major leadership group on campus.
- The Faculty / Student Senate is a major part of the shared governance structure of campus and has legislative authority over educational policy plus additional influence on campus activities.

Paying for the Trip

Where does the money come from?	
State Revenues	18.30%
Payments on Behalf	12.40%
Student Tuition & Fees	16.40%
Private Gifts	3.80%
U.S. Grants & Contracts / Federal Appropriations	15.30%
Institutional Funds	6.80%
Earnings, Misc. (Hospital & Medical Services Plans)	13.80%
Auxiliary & Departmental Operations (Bookstores, Housing, etc.)	13.20%

How is the money spent?	
Instructional & Departmental Research	21.40%
Separately Budgeted Research	18.10%
Extension & Public Service	10.00%
Academic Support	9.00%
Student Services	2.80%
Administration & General	6.70%
Physical Plant	6.10%
Auxiliary & Independent Enterprises	10.00%
Student Aid	3.80%
Hospital Operations	12.10%



illinois.edu

- Data from <http://www.uillinois.edu/our/publications/pdfs/PocketFacts09.pdf> p12.

National IT Sights



illinois.edu

Agilysys..



NComputing®



alabs

CISCO



NEC

echo

lenovo

F.T.N
Priority Business Services

Sum ORACLE

vmware

EDUCAUSE

“EDUCAUSE is a nonprofit association whose mission is to advance higher education by promoting the intelligent use of information technology.”

<http://www.educause.edu/>



illinois.edu

EDUCAUSE Resources

- EDUCAUSE Quarterly
 - <http://www.educause.edu/eq>
- EDUCAUSE Review
 - <http://www.educause.edu/er>
- Discussion Lists
 - <http://www.educause.edu/cg>
- ECAR (EDUCAUSE Center for Applied Research)
 - <http://www.educause.edu/ecar>
- ELI (EDUCAUSE Learning Initiative)
 - <http://www.educause.edu/eli>



illinois.edu

EDUCAUSE Conferences

- [National EDUCAUSE](#)
 - Nov. 3-6, 2009 in Denver, CO
 - Oct. 12-15, 2010 in Anaheim, CA
- [Midwest EDUCAUSE](#)
 - Mar. 15-17, 2010
 - Held at the InterContinental in Chicago
- Additional conferences and seminars info:
 - <http://net.educause.edu/node/31>



illinois.edu

EDUCAUSE Institute Professional Development

- [Management Program](#)
 - Feb. 15-19, 2010 in Tempe, AZ
 - Jul. 19-23, 2010 in Boulder, CO
- [Leadership Program](#)
 - Jul. 12-16, 2010 in Boulder, CO
- [Learning Technology Leadership Program](#)
- [Frye Leadership Institute](#)



illinois.edu

- The Management Program is tailored to higher education IT professionals who are new to the role of manager and who would like to enhance the various practical skills important to effective management...
- The EDUCAUSE Institute Leadership Program is intended to broaden perspectives and develop leadership abilities, enabling the participants to assume leadership roles in information technology areas within their institutions.
- The EDUCAUSE Institute Learning Technology Leadership Program is designed to broaden perspectives and develop leadership abilities, enabling the participants to assume leadership roles in applying learning technology to improve teaching and learning within their institutions.
- The Frye Leadership Institute is designed to develop the next generation of higher education leaders emerging from IT and library backgrounds.

ACM SIGUCCS

- ACM
 - Association for Computing Machinery
- SIGUCCS
 - ACM Special Interest Group on University and College Computing Services
 - <http://www.siguccs.org/>
- SIGUCCS 2009 Fall Conference
 - Oct. 11-14, 2009 in St.Louis, MO
- 2010 Spring Management Symposium
 - April 18-21, 2010 in Victoria, British Columbia



illinois.edu

SIGUCCS is an association of professionals who support and manage the diverse aspects of information technology services in higher education institutions.

SIGUCCS focuses on issues surrounding the support, delivery and management of information technology services in higher education. These include, but are not limited to: network management, technical systems support, end user services (training, documentation, consulting, etc.), operations, administrative and academic programming services, database management, curricular support, audio-visual services, and educational technology issues. Our primary goal is to provide a forum for the professional development of individual members, through conferences, publications, and other services.

Lynnell Lacy, formerly with CITES and currently with IESE in the College of Engineering, has been very active with SIGUCCS. Contact her if you are interested in learning more.

Vendor Relations

- <http://wiki.cites.uiuc.edu/wiki/display/itp/roservices/Vendor+Listing>

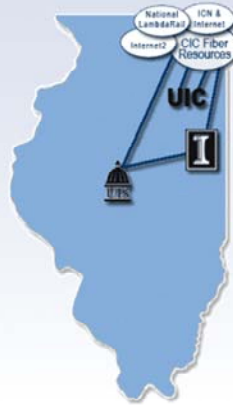
Craig Jackson



illinois.edu

- Andre Krabbe with the Webstore, <http://webstore.illinois.edu/>, is another very good local contact about vendors and the first choice for software vendors.

Regional IT Sights



illinois.edu

CIC

- Committee on Institutional Cooperation
- Founded in 1950
- Big Ten plus University of Chicago (and UIC)
- <http://www.cic.net/>
- <http://www.cic.net/Home/Projects/Technology.aspx>

“For half a century, these 12 world-class research institutions have advanced their academic missions, generated unique opportunities for students and faculty, and served the common good by sharing expertise, leveraging campus resources, and collaborating on innovative programs.”



illinois.edu

ICCN

- InterCampus Communications Network
- <http://www.cites.illinois.edu/projects/iccn/>
- High-speed data network that connects all three campuses and provides connectivity to research networks and peer universities.



illinois.edu

Community IT Sights



illinois.edu

UC2b

- Urbana-Champaign Big Broadband
- Collaborative effort between campus and cities to connect every home, business, school, library, church and public building within Champaign & Urbana to a high-speed, fiber-optic network.
- <http://uc2b.net/>
- <http://wiki.cites.uiuc.edu/wiki/display/bac/>



illinois.edu

Research Park

- “...provides an environment where technology-based businesses can work with the research faculty and students at UIUC to take advantage of opportunities for collaborative research and easy access to University labs, equipment, and services.”
- www.researchpark.illinois.edu



illinois.edu

techMix!

- An informal social gathering sponsored by tech companies and hosted by the Champaign County Economic Development Corporation.
- <http://twitter.com/techcommunity>
- Email to tonym@champaigncountyedc.org to get on announcement list



illinois.edu

Campus IT Org Structure



illinois.edu

University IT Sights



UTMT

AITS

ITPC

DS



illinois.edu

UTMT

- University Technology Management Team
- “advisory and coordinating group”
- <http://www.utmt.uillinois.edu/>
- Current working groups:
 - Common Architectural Vision (CAV)
 - Information Security Committee
 - ICCN Proposal Review Committee



illinois.edu

- Campus CIOs plus UIC medical center CIO, head of AITS, University CFO, faculty representative

AITS

- Administrative Information Technology Services
- Michael Hites, Assoc. Vice President
- “...delivers enterprise-wide information technology solutions and services in support of the administrative processes of the University of Illinois”
- <http://www.ait.s.uillinois.edu/>



illinois.edu

ITPC

- Information Technology Priorities Committee
- “...process for prioritizing administrative systems initiatives.”
- <http://www.itpc.uillinois.edu/>



illinois.edu

DS

- Decision Support
- Andrea Ballinger, Asst. Vice President
- “... Business Intelligence Competency Center for the University of Illinois.”
- <http://www.ds.uillinois.edu/>



illinois.edu

Campus Sights



Senate IT

**Office of
the CIO**



**IT
Alliance**

CITES

OPIA

DMI

Web Services

I³



illinois.edu

Senate IT

- Roy Campbell, Chair
- Deal with IT policy; examine trends in IT; serve in a broad advisory capacity to CIO
- http://www.senate.illinois.edu/bylaws_it.asp



illinois.edu

Office of the CIO

- Sally Jackson, CIO and Assoc. Provost
- “provide campus-wide IT strategies that will contribute to the success of the university as an intellectual community and facilitate pre-eminence in research, education, and outreach”
- <http://www.cio.illinois.edu/>



illinois.edu

OPIA

- Office of Privacy and Information Assurance
- Aka “CITES Security”
- Mike Corn, Chief Privacy and Security Officer
- <http://security.illinois.edu/>



illinois.edu

DMI

- Division of Management Information
- Carol Livingstone, Assoc. Provost and Dir.
- <http://dmi.illinois.edu/>



illinois.edu

Public Affairs Web Services

- “...offers a variety of tools to help you achieve your communications goals.”
- Tools include event calendars, blogs, discussions boards, surveys, forms, newsletters, and emailer.
- <http://webservices.illinois.edu/>
- <http://www.publicaffairs.illinois.edu/marketing/web/webtools.html>



illinois.edu

I³

- Illinois Informatics Initiative
- <http://www.informatics.illinois.edu/>
- I-CHASS
 - Institute for Computing in Humanities, Arts, and Social Science
 - <http://www.chass.illinois.edu/>
- CII
 - Community Informatics Initiative
 - <http://www.cii.illinois.edu/>



illinois.edu

NCSA

- National Center for Supercomputing Applications
- <http://www.ncsa.illinois.edu/>
- Blue Waters
 - First sustained petaflop performance system
 - <http://www.ncsa.illinois.edu/BlueWaters/>



illinois.edu

IT Alliance

- Information exchange on technical initiatives and best practices
- Primarily consists of representatives from large IT Providers on campus
- No public website currently
- Mike Corn, sponsor for Office of the CIO
- James Quisenberry, chair for AY09-10



illinois.edu

CITES

- Campus Information Technology and Educational Services
- Panit Lisy, Executive Director
- “CITES is the provider of campus-wide computing, networking, telephone, and instructional technology services supporting academic activities of faculty, staff, and students at the University of Illinois at Urbana-Champaign.”
- <http://www.cites.illinois.edu/>



illinois.edu

CITES Sights



illinois.edu

CITES Divisions

Division	Director
Application Services	Dan Jacobsohn
Service Centers	Janet Jones
Research and Learning Technology Services	Brian McNurlen
Enterprise Infrastructure	Tony Rimovksy
Networking	Michael Smeltzer
Physical Infrastructure	Mike Smeltzer
Administration and Planning	Helen Zhang
Process Improvement	Paul Lucas
IT Architect	Charley Kline



illinois.edu

CITES Divisions (cont.)

- Service Centers
 - Janet Jones, Assoc. Dir.
 - CITES Help Desk, Service Request Management, Client Relationship Management, CITES Service Center Communications
- Application Services
 - Dan Jacobsohn, Dir.
 - Database Services, Identity Management, Portal Services, Production Applications, and Software Engineering



illinois.edu

CITES Divisions (cont.)

- Research and Learning Technology Services
 - Brian McNurlen, Acting Assoc. Dir.
 - Learning Technologies, Research Support Services, Learning Space Services, Academic Technology Services
- Enterprise Infrastructure
 - Tony Rimovsky, Assoc. Dir.
 - Storage and Backup, Windows System Management, Systems Management Group, Data Center



illinois.edu

CITES Divisions (cont.)

- Networking
 - Mike Smeltzer, Dir.
 - Network Engineering, Network Design, Network Support and Network Services
- Physical Infrastructure
 - Mike Smeltzer, Acting Dir.
 - Plant Engineering; Communications Installation & Maintenance Services (CIMS); Assignments; and Classroom & Conferencing Engineering



illinois.edu

CITES Divisions (cont.)

- Administration and Planning
 - Helen Zhang, Assoc. Dir.
 - Business Analysis and Contract Management, Organizational Development and Learning, Training Services, WebStore, and IT Administration
- Process Improvement
 - Paul Lucas, Assoc. Dir.
 - Business Continuity Planning (BCP) and Audit Support; Change Management; Project Management; User Experience Design; and Technical Field Services.



illinois.edu

CITES Divisions (cont.)

- IT Architect
 - Charley Kline
 - “The IT Architect is responsible for the overall Information Technology Systems architecture that supports the University's business strategy and goals. Such an architecture must encompass the design of new IT services and the modification of existing ones, both to be sure they align with the IT systems architecture and also to maintain a consistent vision of services and their quality. ”



illinois.edu

College Sights



illinois.edu

Council of Academic CIOs



illinois.edu

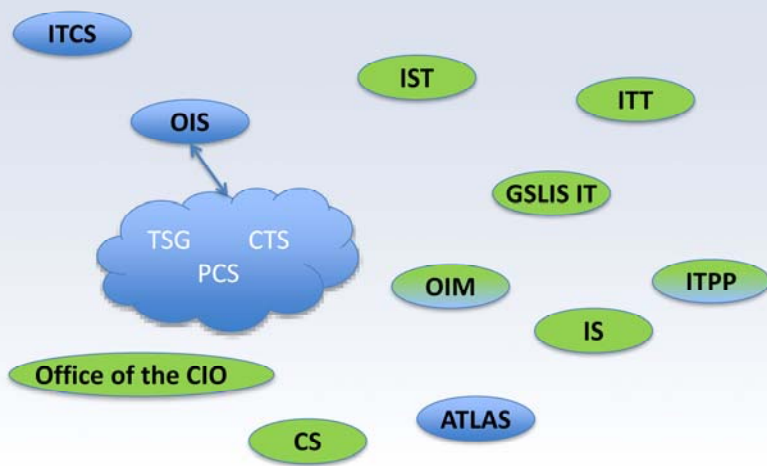
Council of Academic CIOs

- Council of Academic CIOs
 - Aka “Council of CIOs”
 - <http://provost.illinois.edu/committees/IT.html>
 - *Group Website Forthcoming*



illinois.edu

College IT Panorama



illinois.edu

College IT (cont.)

- ACES – ITCS – Paul Hixson
 - Information Technology and Communications Services
 - <http://itcs.illinois.edu/>
- AHS – IST – Bill Goodman
 - Office of Information, Security, and Technology
 - Also have AHS Web Services
- Aviation – no office
- Business – OIM – Lanny Arvan
 - Office for Information Management



illinois.edu

College IT (cont.)

- Education - Office of the CIO – Scott Johnson
 - Office of the CIO
 - <http://education.illinois.edu/cio/>
- Engineering – OIS – Chuck Thompson
 - Office of Information Services
- FAA – no office – Jim Anderson
- GSLIS – GSLIS Information Technology Support
 - Erik Hege
 - Formerly OITR
 - <http://www.lis.illinois.edu/oitr/help/>
 - <http://www.lis.illinois.edu/itd/>



illinois.edu

College IT (cont.)

- Labor & Employment Relations – no office
- LAS – ATLAS – Deanna Raineri
 - Applied Technologies for Learning in the Arts & Sciences
 - <http://www.atlas.illinois.edu/>
- Law – IS + DS – John Rossi
 - Information Services, Data Services
- Library – ITPP – Beth Sandore
 - Office of Information Technology Planning and Policy
 - <http://www.library.illinois.edu/administration/it/>



illinois.edu

College IT (cont.)

- Media – no office
- Medicine – IIT – Tod Jebe
 - Instruction and Information Technology
- Social Work – no office
- Vet Med – CS – Craig Flowers
 - Computing Services
 - <http://vetmed.illinois.edu/net/>



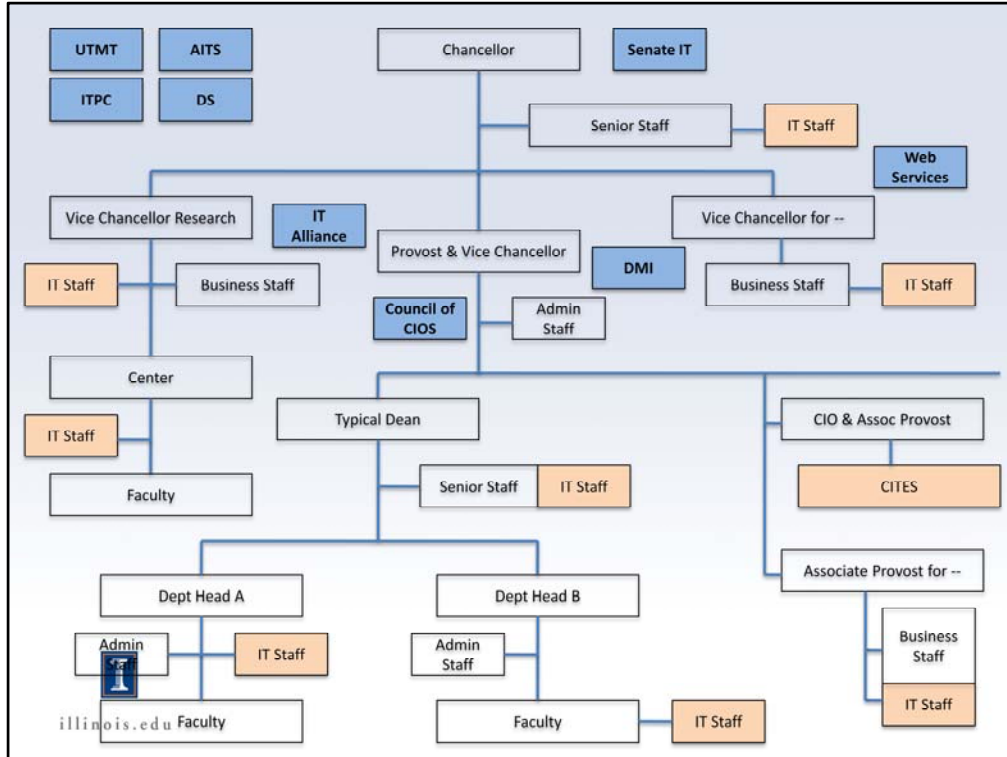
illinois.edu

Other Campus IT Sights

<u>Provost</u>	<u>VCR</u>	<u>VCSA</u>	<u>Chancellor</u>
Beckman	IGB	Housing	F&S
	NCSA		DIA
	INRS		Swanlund

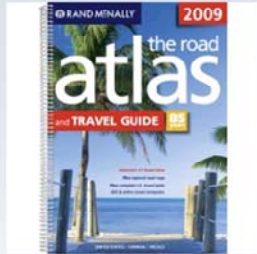


illinois.edu



This org chart diagram was created by Sally Jackson. The blue boxes were added for this presentation.

Travel Guides



illinois.edu

IT Groups / Resources

- CCSP
 - <http://ccsp.cites.illinois.edu/>
 - <http://ccsp.cites.illinois.edu/enroll.asp>
- Caffeine Break
- IT Watercooler
 - <http://itwatercooler.illinois.edu/>
- COI: Leadership, Higher Ed, and IT
 - <https://wiki.cites.uiuc.edu/wiki/display/ciolead/>



illinois.edu

IT Groups / Resources (cont.)

- CITES IT Exchange
 - <http://wiki.cites.uiuc.edu/wiki/display/citesite/>
- Peer Coaching
 - <http://illinoispeercoaching.blogspot.com/>
 - <https://listserv.illinois.edu/wa.cgi?SUBED1=PEER-COACHING&A=1>
- Campus Webmasters
 - <http://webmasters.illinois.edu/>
 - <https://listserv.illinois.edu/wa.cgi?SUBED1=UIUCWEBMASTERS&A=1>



illinois.edu

IT Groups / Resources (cont.)

- Campus Datamasters
 - <http://education.illinois.edu/datamasters/>
 - <https://listserv.illinois.edu/wa.cgi?SUBED1=UI-DATAMASTERS&A=1>
- Networkers
 - <https://listserv.illinois.edu/wa.cgi?SUBED1=NETWORKERS-L&A=1>



illinois.edu

EdTech Groups / Resources

- Edmedia / Multimedia Users Group
 - <http://multimediausers.illinois.edu/>
 - <https://listserv.illinois.edu/wa.cgi?SUBED1=EDMEDIA-L&A=1>
- Educational Technologists Forum
 - <http://listserv.uiuc.edu/wa.cgi?SUBED1=EFORUM&A=1>
- CITES EdTech
 - <http://www.cites.illinois.edu/edtech/>
- Center for Teaching Excellence (CTE)
 - <http://cte.illinois.edu/>



illinois.edu

EdTech Groups / Resources (cont.)

- E-Learning Committee
 - <http://provost.illinois.edu/committees/elearning.html>
 - <https://apps.lis.illinois.edu/wiki/display/elearning/>
- e-Learning Initiative (e-LI)
 - [Global Campus](#) replacement



illinois.edu

Campus Computer Labs – An Incomplete List

- ACES (ACF)
 - <http://acf.aces.illinois.edu/>
- Business
 - <http://www.business.illinois.edu/Finance/oim.aspx>
- Education
 - <http://ed.uiuc.edu/cio/teaching/labsclassrooms.html>
- Engineering (EWS)
 - <http://ews.illinois.edu/>
- LAS (ATLAS)
 - <http://www.atlas.illinois.edu/services/rooms/labs/>
 - <http://www.atlas.illinois.edu/services/rooms/classrooms/>
- GSILIS
 - <http://www.lis.illinois.edu/oitr/help/lrl/>
- Media
 - <http://www.media.illinois.edu/current/computer.html>
- CITES ICS
 - <http://www.cites.illinois.edu/ics/>
- Housing
 - <http://www.housing.illinois.edu/Current/Technology/Computer%20Labs.aspx>



illinois.edu

On-Campus Training Resources

- Center for Training and Professional Development
 - <http://www.trainingcenter.illinois.edu/>
- FAST³
 - <http://www.fast3.illinois.edu/>
- Office of Continuing Education (OCE)
 - <http://www.continuinged.illinois.edu/>
- Web Services
 - <http://illinois.edu/calendar/Calendar?calId=220>
- Accessibility
 - <http://itaccessibility.illinois.edu/training/>
- CITES EdTech
 - http://www.cites.illinois.edu/edtech/attend_events/
- CITES Security
 - <http://www.cites.illinois.edu/security/orientation/>



illinois.edu

HR Campus Groups / Resources

- Council of Academic Professionals (CAP)
 - <http://cap.illinois.edu/>
 - <http://wiki.cites.uiuc.edu/wiki/display/cap/>
- Academic Human Resources
 - <http://www.ahr.illinois.edu/>
- Staff Human Resources
 - <http://www.shr.illinois.edu/>
- Academic Professionals
 - <http://ap.illinois.edu/>
- Campus Job Board - <http://jobs.illinois.edu/>



illinois.edu

Other Campus Groups / Resources

- Chief Communication Officers
 - <http://www.publicaffairs.illinois.edu/campus/cco.html>
- Campus Communications Council
 - <http://www.publicaffairs.illinois.edu/campus/ccc.html>
- Business Manager's Group (BMG)
 - <http://wiki.cites.uiuc.edu/wiki/display/bmg/>



illinois.edu

Other Campus Groups / Resources (cont.)

- Office of Campus Emergency Planning
 - Todd Short, Dir.
 - <http://www.ocep.illinois.edu/>
- Facilities & Services
 - <http://www.fs.uiuc.edu/>
- i-card
 - <http://www.icard.uillinois.edu/>
- CAM – Campus Administrative Manual
 - <http://www.fs.uiuc.edu/cam>



illinois.edu

Traveler's Assistance



illinois.edu

Accessibility Resources

- IITAA
 - Illinois Information Technology Accessibility Acts
 - <http://www.dhs.state.il.us/iitaa/>
- ITaccess
 - Information Technology Accessibility Initiative
 - Tim Offenstein, coordinator
 - <http://itaccessibility.illinois.edu/>



illinois.edu

Accessibility Resources (cont.)

- CITA
 - Illinois Center for Information Technology and Web Accessibility
 - <http://www.cita.illinois.edu/>
- DRES
 - Disability Resources and Educational Services
 - Jon Gunderson, Coordinator of Assistive Communication & Information Technology
 - <http://www.disability.illinois.edu/>



illinois.edu

The Fine Print: Policies

- <http://www.cio.illinois.edu/policies/>
 - [Appropriate Use Policy](#)
 - [Categories of authorized users](#)
 - [Information Security Policy](#)
 - [Web Privacy](#)
- [FERPA](#)
 - Family Educational Rights and Privacy Act
- [IITAA](#)
 - Illinois Information Technology Accessibility Act



illinois.edu

Landscaping

- Data center consolidation
 - <http://wiki.cites.uiuc.edu/wiki/display/dcc/>
 - <http://wiki.cites.uiuc.edu/wiki/display/citesdcpub/>
- Server virtualization
 - <http://www.cites.illinois.edu/vmware/>
- Email/calendaring refresh
 - <http://illinois.edu/goto/emailcalendaring>
- my.illinois.edu
 - <http://my.illinois.edu/>
- Mobile device app development
- Microsoft CA
- Identity management
- Storage service



illinois.edu

IT@Illinois

- Public website
 - <http://illinois.edu/goto/itatillinois>
- Private website
 - <http://wiki.cites.uiuc.edu/wiki/display/itatillinois/>
- Announcements list
 - https://listserv.illinois.edu/wa.cgi?SUBED1=IT_AT_ILLINOIS&A=1
- Review panel report and Provost/CIO response
 - <https://wiki.cites.uiuc.edu/wiki/display/itatillinois/Panel+Report+on+Concepts>



illinois.edu

Thank You!

Questions?

Comments?

Corrections?

Additions?



illinois.edu