

UNIVERSITY OF ILLINOIS
AT URBANA-CHAMPAIGN

The Geography of IT at Illinois

Chuck Thompson
Asst. Dean for Information Services, College of Engineering

IT Pro Orientation - September 22, 2009



illinois.edu



Where Do You Work?

Earnings Statement

<https://nessie.uhr.uillinois.edu/cf/EarnStmnt/PrintEarnings.cfm?dn=4562...>

University of Illinois
Chicago - Springfield - Urbana-Champaign

This serves as the official notification of employee earnings and deductions. Questions should be referred by email to paying@uillinois.edu or phone at 866-476-3586.

UIN: [REDACTED]

Payee:

Charles Thompson

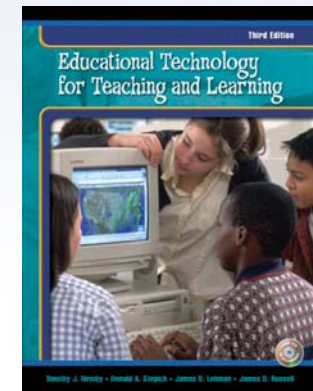
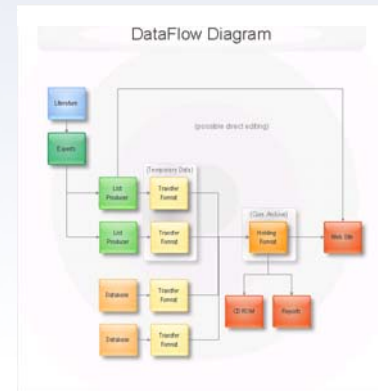
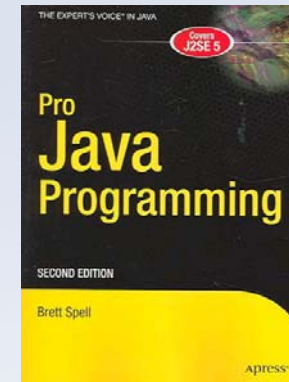
Current Earning

Pay Date	Pay Period	Net Amount	Check Number	Check Amount
08/14/2009	07/16/2009 to 08/15/2009	[REDACTED]		

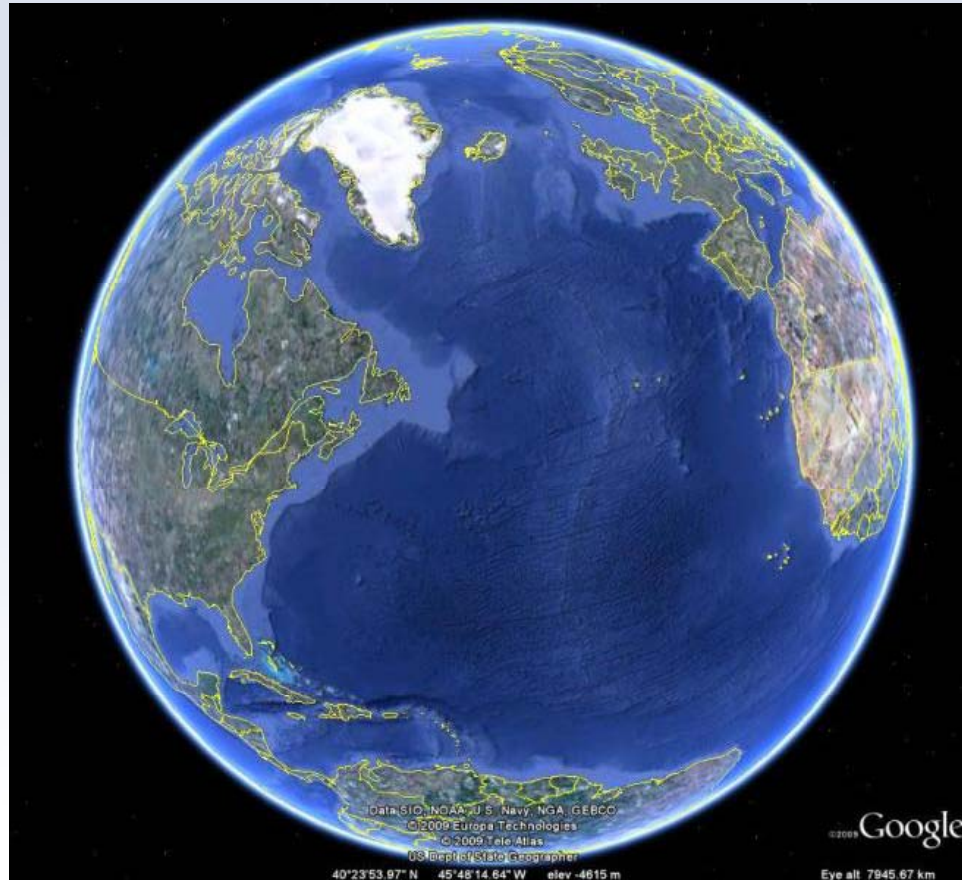


illinois.edu

“I’m From (Near) Chicago”



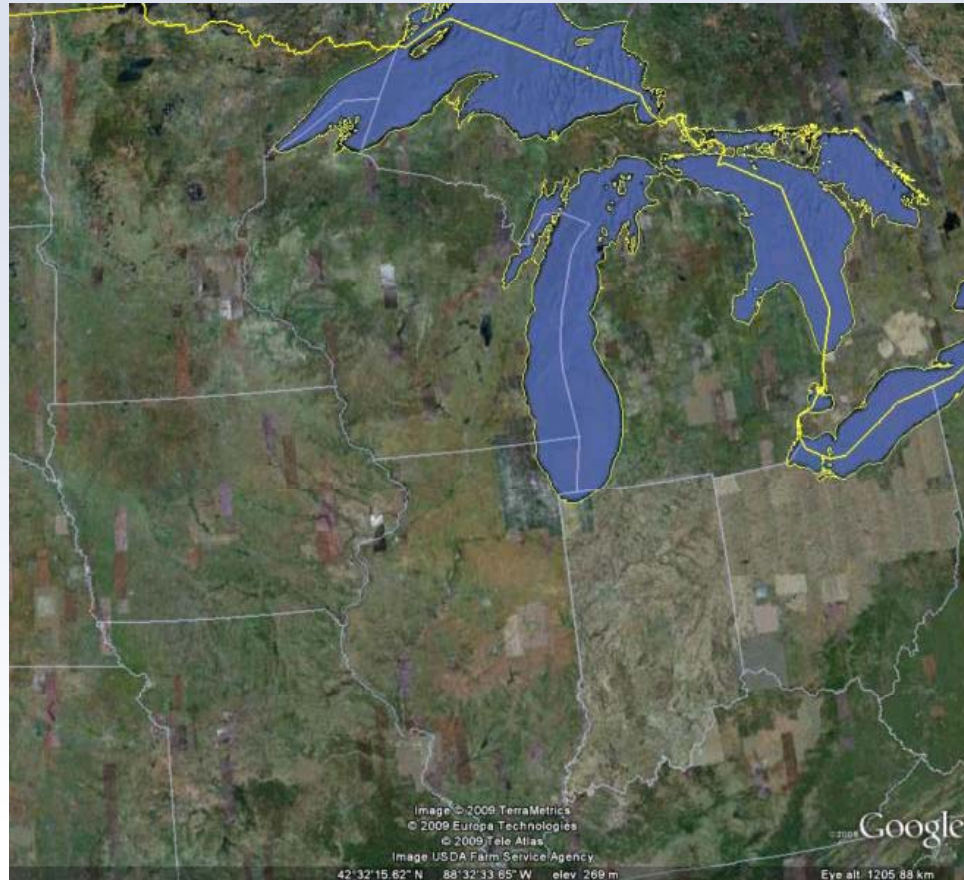
The World View



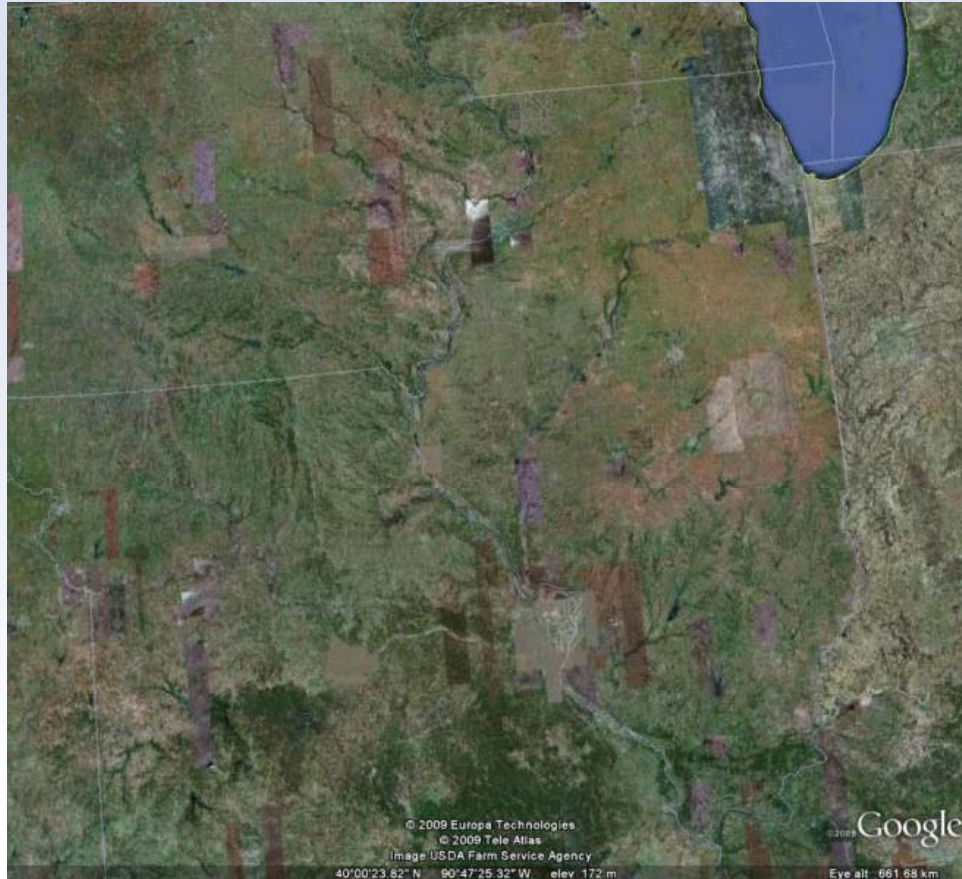
The National View



The Regional View



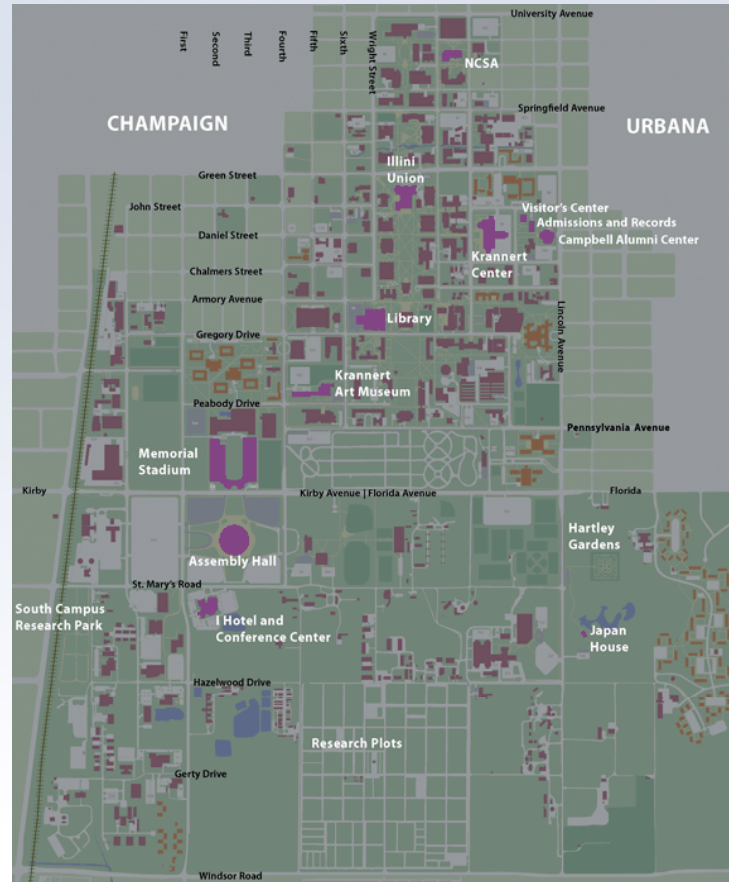
The State View



The University View



The Campus View



Paying for the Trip

Where does the money come from?	
State Revenues	18.30%
Payments on Behalf	12.40%
Student Tuition & Fees	16.40%
Private Gifts	3.80%
U.S. Grants & Contracts / Federal Appropriations	15.30%
Institutional Funds	6.80%
Earnings, Misc. (Hospital & Medical Services Plans)	13.80%
Auxiliary & Departmental Operations (Bookstores, Housing, etc.)	13.20%

How is the money spent?	
Instructional & Departmental Research	21.40%
Separately Budgeted Research	18.10%
Extension & Public Service	10.00%
Academic Support	9.00%
Student Services	2.80%
Administration & General	6.70%
Physical Plant	6.10%
Auxiliary & Independent Enterprises	10.00%
Student Aid	3.80%
Hospital Operations	12.10%



National IT Sights



EDUCAUSE

“EDUCAUSE is a nonprofit association whose mission is to advance higher education by promoting the intelligent use of information technology.”

<http://www.educause.edu/>



EDUCAUSE Resources

- EDUCAUSE Quarterly
 - <http://www.educause.edu/eq>
- EDUCAUSE Review
 - <http://www.educause.edu/er>
- Discussion Lists
 - <http://www.educause.edu/cg>
- ECAR (EDUCAUSE Center for Applied Research)
 - <http://www.educause.edu/ecar>
- ELI (EDUCAUSE Learning Initiative)
 - <http://www.educause.edu/eli>



EDUCAUSE Conferences

- [National EDUCAUSE](#)
 - Nov. 3-6, 2009 in Denver, CO
 - Oct. 12-15, 2010 in Anaheim, CA
- [Midwest EDUCAUSE](#)
 - Mar. 15-17, 2010
 - Held at the InterContinental in Chicago
- Additional conferences and seminars info:
 - <http://net.educause.edu/node/31>



EDUCAUSE Institute Professional Development

- [Management Program](#)
 - Feb. 15-19, 2010 in Tempe, AZ
 - Jul. 19-23, 2010 in Boulder, CO
- [Leadership Program](#)
 - Jul. 12-16, 2010 in Boulder, CO
- [Learning Technology Leadership Program](#)
- [Frye Leadership Institute](#)



ACM SIGUCCS

- ACM
 - Association for Computing Machinery
- SIGUCCS
 - ACM Special Interest Group on University and College Computing Services
 - <http://www.siguccs.org/>
- SIGUCCS 2009 Fall Conference
 - Oct. 11-14, 2009 in St.Louis, MO
- 2010 Spring Management Symposium
 - April 18-21, 2010 in Victoria, British Columbia



Vendor Relations

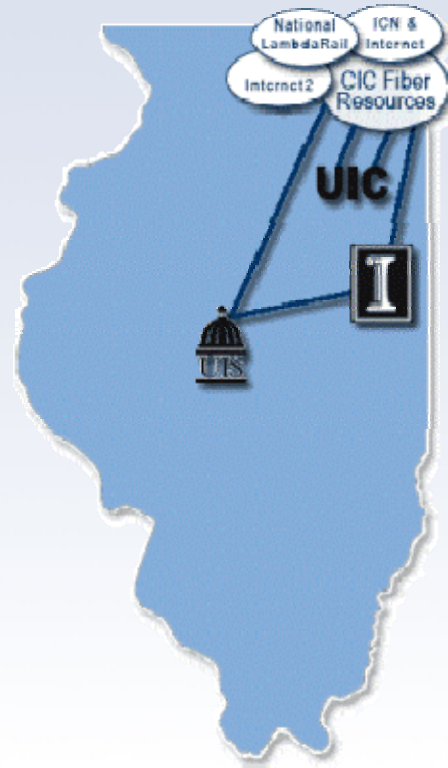
- <http://wiki.cites.uiuc.edu/wiki/display/itp/rosvservices/Vendor+Listing>



Craig Jackson



Regional IT Sights



CIC

- Committee on Institutional Cooperation
- Founded in 1950
- Big Ten plus University of Chicago (and UIC)
- <http://www.cic.net/>
- <http://www.cic.net/Home/Projects/Technology.aspx>

“For half a century, these 12 world-class research institutions have advanced their academic missions, generated unique opportunities for students and faculty, and served the common good by sharing expertise, leveraging campus resources, and collaborating on innovative programs.”



ICCN

- InterCampus Communications Network
- <http://www.cites.illinois.edu/projects/iccn/>
- High-speed data network that connects all three campuses and provides connectivity to research networks and peer universities.



Community IT Sights



UC2b

- Urbana-Champaign Big Broadband
- Collaborative effort between campus and cities to connect every home, business, school, library, church and public building within Champaign & Urbana to a high-speed, fiber-optic network.
- <http://uc2b.net/>
- <http://wiki.cites.uiuc.edu/wiki/display/bac/>



Research Park

- “...provides an environment where technology-based businesses can work with the research faculty and students at UIUC to take advantage of opportunities for collaborative research and easy access to University labs, equipment, and services.”
- www.researchpark.illinois.edu



techMix!

- An informal social gathering sponsored by tech companies and hosted by the Champaign County Economic Development Corporation.
- <http://twitter.com/techcommunity>
- Email to tonym@champaigncountyedc.org to get on announcement list



Campus IT Org Structure



University IT Sights



UTMT

AITS

ITPC

DS



UTMT

- University Technology Management Team
- “advisory and coordinating group”
- <http://www.utmt.uillinois.edu/>
- Current working groups:
 - Common Architectural Vision (CAV)
 - Information Security Committee
 - ICCN Proposal Review Committee



AITS

- Administrative Information Technology Services
- Michael Hites, Assoc. Vice President
- “...delivers enterprise-wide information technology solutions and services in support of the administrative processes of the University of Illinois”
- <http://www.ait.s.uillinois.edu/>



ITPC

- Information Technology Priorities Committee
- “...process for prioritizing administrative systems initiatives.”
- <http://www.itpc.uillinois.edu/>



DS

- Decision Support
- Andrea Ballinger, Asst. Vice President
- “... Business Intelligence Competency Center for the University of Illinois.”
- <http://www.ds.uillinois.edu/>



Campus Sights



Senate IT

**Office of
the CIO**



**IT
Alliance**

CITES

OPIA

DMI

Web Services

I³



Senate IT

- Roy Campbell, Chair
- Deal with IT policy; examine trends in IT; serve in a broad advisory capacity to CIO
- http://www.senate.illinois.edu/bylaws_it.asp



Office of the CIO

- Sally Jackson, CIO and Assoc. Provost
- “provide campus-wide IT strategies that will contribute to the success of the university as an intellectual community and facilitate pre-eminence in research, education, and outreach”
- <http://www.cio.illinois.edu/>



OPIA

- Office of Privacy and Information Assurance
- Aka “CITES Security”
- Mike Corn, Chief Privacy and Security Officer
- <http://security.illinois.edu/>



DMI

- Division of Management Information
- Carol Livingstone, Assoc. Provost and Dir.
- <http://dmi.illinois.edu/>



Public Affairs Web Services

- “...offers a variety of tools to help you achieve your communications goals.”
- Tools include event calendars, blogs, discussions boards, surveys, forms, newsletters, and emailer.
- <http://webservices.illinois.edu/>
- <http://www.publicaffairs.illinois.edu/marketing/web/webtools.html>



I³

- Illinois Informatics Initiative
- <http://www.informatics.illinois.edu/>

- I-CHASS
 - Institute for Computing in Humanities, Arts, and Social Science
 - <http://www.chass.illinois.edu/>

- CII
 - Community Informatics Initiative
 - <http://www.cii.illinois.edu/>



NCSA

- National Center for Supercomputing Applications
- <http://www.ncsa.illinois.edu/>
- Blue Waters
 - First sustained petaflop performance system
 - <http://www.ncsa.illinois.edu/BlueWaters/>



IT Alliance

- Information exchange on technical initiatives and best practices
- Primarily consists of representatives from large IT Providers on campus
- No public website currently
- Mike Corn, sponsor for Office of the CIO
- James Quisenberry, chair for AY09-10



CITES

- Campus Information Technology and Educational Services
- Panit Lisy, Executive Director
- “CITES is the provider of campus-wide computing, networking, telephone, and instructional technology services supporting academic activities of faculty, staff, and students at the University of Illinois at Urbana-Champaign.”
- <http://www.cites.illinois.edu/>



CITES Sights



CITES Divisions

Division	Director
Application Services	Dan Jacobsohn
Service Centers	Janet Jones
Research and Learning Technology Services	Brian McNurlen
Enterprise Infrastructure	Tony Rimovksy
Networking	Michael Smeltzer
Physical Infrastructure	Mike Smeltzer
Administration and Planning	Helen Zhang
Process Improvement	Paul Lucas
IT Architect	Charley Kline



CITES Divisions (cont.)

- **Service Centers**
 - Janet Jones, Assoc. Dir.
 - CITES Help Desk, Service Request Management, Client Relationship Management, CITES Service Center Communications
- **Application Services**
 - Dan Jacobsohn, Dir.
 - Database Services, Identity Management, Portal Services, Production Applications, and Software Engineering



CITES Divisions (cont.)

- **Research and Learning Technology Services**
 - Brian McNurlen, Acting Assoc. Dir.
 - Learning Technologies, Research Support Services, Learning Space Services, Academic Technology Services
- **Enterprise Infrastructure**
 - Tony Rimovsky, Assoc. Dir.
 - Storage and Backup, Windows System Management, Systems Management Group, Data Center



CITES Divisions (cont.)

- **Networking**
 - Mike Smeltzer, Dir.
 - Network Engineering, Network Design, Network Support and Network Services
- **Physical Infrastructure**
 - Mike Smeltzer, Acting Dir.
 - Plant Engineering; Communications Installation & Maintenance Services (CIMS); Assignments; and Classroom & Conferencing Engineering



CITES Divisions (cont.)

- **Administration and Planning**
 - Helen Zhang, Assoc. Dir.
 - Business Analysis and Contract Management, Organizational Development and Learning, Training Services, WebStore, and IT Administration
- **Process Improvement**
 - Paul Lucas, Assoc. Dir.
 - Business Continuity Planning (BCP) and Audit Support; Change Management; Project Management; User Experience Design; and Technical Field Services.



CITES Divisions (cont.)

- IT Architect
 - Charley Kline
 - “The IT Architect is responsible for the overall Information Technology Systems architecture that supports the University's business strategy and goals. Such an architecture must encompass the design of new IT services and the modification of existing ones, both to be sure they align with the IT systems architecture and also to maintain a consistent vision of services and their quality. ”

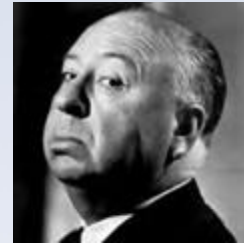


College Sights

A word cloud of various fields and departments, including: VetMed, FAA, ACES, LER, AVIATION, JOURNAL, MEDIA, Medicine, Engineering, SocialWork, Business, Education, LAW, SHHS, and Library.



Council of Academic CIOs

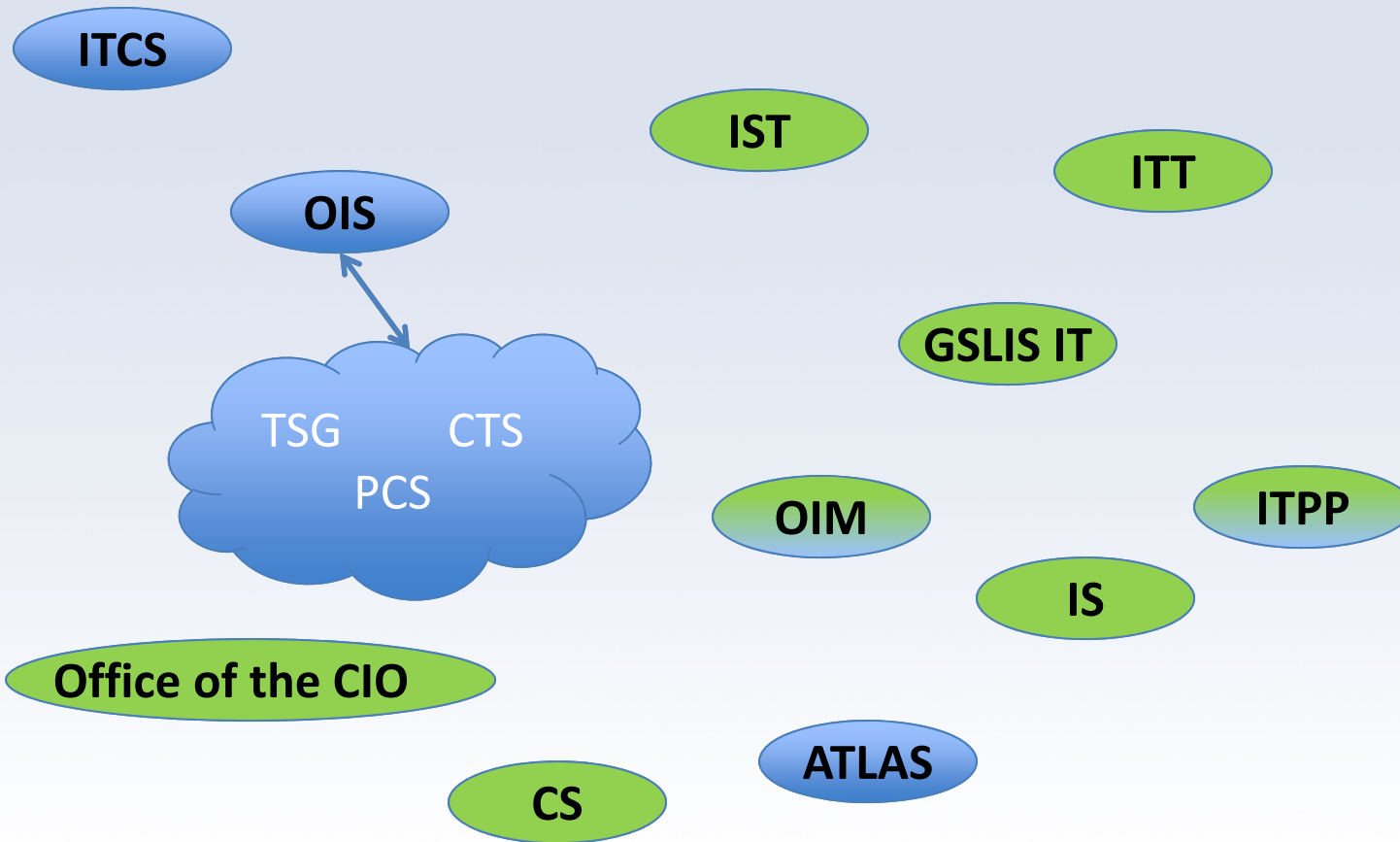


Council of Academic CIOs

- Council of Academic CIOs
 - Aka “Council of CIOs”
 - <http://provost.illinois.edu/committees/IT.html>
 - *Group Website Forthcoming*



College IT Panorama



College IT (cont.)

- **ACES – ITCS – Paul Hixson**
 - Information Technology and Communications Services
 - <http://itcs.illinois.edu/>
- **AHS – IST – Bill Goodman**
 - Office of Information, Security, and Technology
 - Also have AHS Web Services
- **Aviation – no office**
- **Business – OIM – Lanny Arvan**
 - Office for Information Management



College IT (cont.)

- Education - Office of the CIO – Scott Johnson
 - Office of the CIO
 - <http://education.illinois.edu/cio/>
- Engineering – OIS – Chuck Thompson
 - Office of Information Services
- FAA – no office – Jim Anderson
- GSLIS – GSLIS Information Technology Support
 - Erik Hege
 - Formerly OITR
 - <http://www.lis.illinois.edu/oitr/help/>
 - <http://www.lis.illinois.edu/itd/>



College IT (cont.)

- Labor & Employment Relations – no office
- LAS – ATLAS – Deanna Raineri
 - Applied Technologies for Learning in the Arts & Sciences
 - <http://www.atlas.illinois.edu/>
- Law – IS + DS – John Rossi
 - Information Services, Data Services
- Library – ITPP – Beth Sandore
 - Office of Information Technology Planning and Policy
 - <http://www.library.illinois.edu/administration/it/>



College IT (cont.)

- Media – no office
- Medicine – IIT – Tod Jebe
 - Instruction and Information Technology
- Social Work – no office
- Vet Med – CS – Craig Flowers
 - Computing Services
 - <http://vetmed.illinois.edu/net/>



Other Campus IT Sights

Provost

Beckman

VCR

IGB

NCSA

INRS

VCSA

Housing

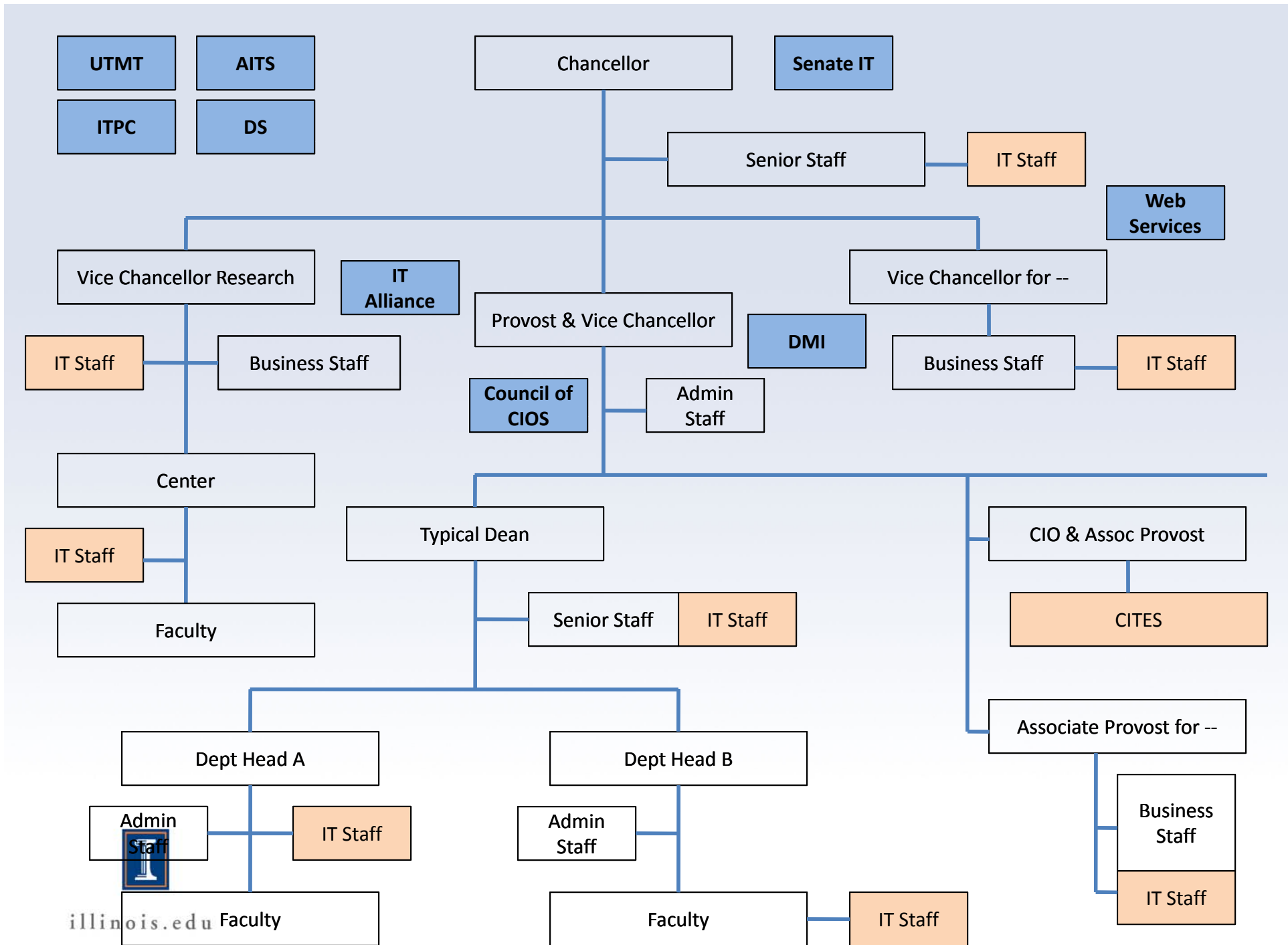
Chancellor

F&S

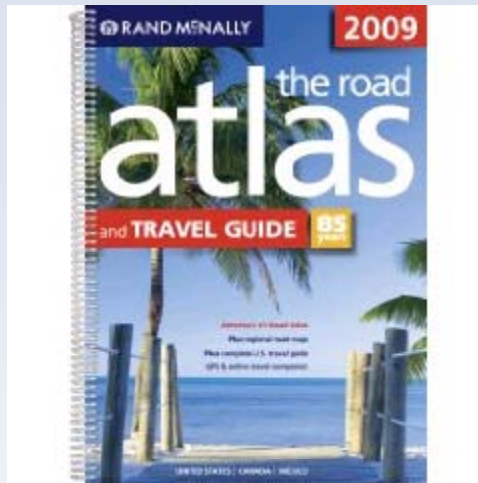
DIA

Swanlund





Travel Guides



IT Groups / Resources

- CCSP
 - <http://ccsp.cites.illinois.edu/>
 - <http://ccsp.cites.illinois.edu/enroll.asp>
- Caffeine Break
- IT Watercooler
 - <http://itwatercooler.illinois.edu/>
- COI: Leadership, Higher Ed, and IT
 - <https://wiki.cites.uiuc.edu/wiki/display/ciolead/>



IT Groups / Resources (cont.)

- CITES IT Exchange
 - <http://wiki.cites.uiuc.edu/wiki/display/citesite/>
- Peer Coaching
 - <http://illinoispeercoaching.blogspot.com/>
 - <https://listserv.illinois.edu/wa.cgi?SUBED1=PEER-COACHING&A=1>
- Campus Webmasters
 - <http://webmasters.illinois.edu/>
 - <https://listserv.illinois.edu/wa.cgi?SUBED1=UIUCWEBMASTERS&A=1>



IT Groups / Resources (cont.)

- **Campus Datamasters**
 - <http://education.illinois.edu/datamasters/>
 - <https://listserv.illinois.edu/wa.cgi?SUBED1=UI-DATAMASTERS&A=1>
- **Networkers**
 - <https://listserv.illinois.edu/wa.cgi?SUBED1=NETWORKERS-L&A=1>



EdTech Groups / Resources

- Edmedia / Multimedia Users Group
 - <http://multimediausers.illinois.edu/>
 - <https://listserv.illinois.edu/wa.cgi?SUBED1=EDMEDIA-L&A=1>
- Educational Technologists Forum
 - <http://listserv.uiuc.edu/wa.cgi?SUBED1=EFORUM&A=1>
- CITES EdTech
 - <http://www.cites.illinois.edu/edtech/>
- Center for Teaching Excellence (CTE)
 - <http://cte.illinois.edu/>



EdTech Groups / Resources (cont.)

- E-Learning Committee
 - <http://provost.illinois.edu/committees/elearning.html>
 - <https://apps.lis.illinois.edu/wiki/display/elearning/>
- e-Learning Initiative (e-LI)
 - [Global Campus](#) replacement



Campus Computer Labs – An Incomplete List

- ACES (ACF)
 - <http://acf.aces.illinois.edu/>
- Business
 - <http://www.business.illinois.edu/Finance/oim.aspx>
- Education
 - <http://ed.uiuc.edu/cio/teaching/labsclassrooms.html>
- Engineering (EWS)
 - <http://ews.illinois.edu/>
- LAS (ATLAS)
 - <http://www.atlas.illinois.edu/services/rooms/labs/>
 - <http://www.atlas.illinois.edu/services/rooms/classrooms/>
- GSLIS
 - <http://www.lis.illinois.edu/oitr/help/lrl/>
- Media
 - <http://www.media.illinois.edu/current/computer.html>
- CITES ICS
 - <http://www.cites.illinois.edu/ics/>
- Housing
 - <http://www.housing.illinois.edu/Current/Technology/Computer%20Labs.aspx>



On-Campus Training Resources

- Center for Training and Professional Development
 - <http://www.trainingcenter.illinois.edu/>
- FAST³
 - <http://www.fast3.illinois.edu/>
- Office of Continuing Education (OCE)
 - <http://www.continuinged.illinois.edu/>
- Web Services
 - <http://illinois.edu/calendar/Calendar?calId=220>
- Accessibility
 - <http://itaccessibility.illinois.edu/training/>
- CITES EdTech
 - http://www.cites.illinois.edu/edtech/attend_events/
- CITES Security
 - <http://www.cites.illinois.edu/security/orientation/>



HR Campus Groups / Resources

- Council of Academic Professionals (CAP)
 - <http://cap.illinois.edu/>
 - <http://wiki.cites.uiuc.edu/wiki/display/cap/>
- Academic Human Resources
 - <http://www.ahr.illinois.edu/>
- Staff Human Resources
 - <http://www.shr.illinois.edu/>
- Academic Professionals
 - <http://ap.illinois.edu/>
- Campus Job Board - <http://jobs.illinois.edu/>



Other Campus Groups / Resources

- Chief Communication Officers
 - <http://www.publicaffairs.illinois.edu/campus/cco.html>
- Campus Communications Council
 - <http://www.publicaffairs.illinois.edu/campus/ccc.html>
- Business Manager's Group (BMG)
 - <http://wiki.cites.uiuc.edu/wiki/display/bmg/>

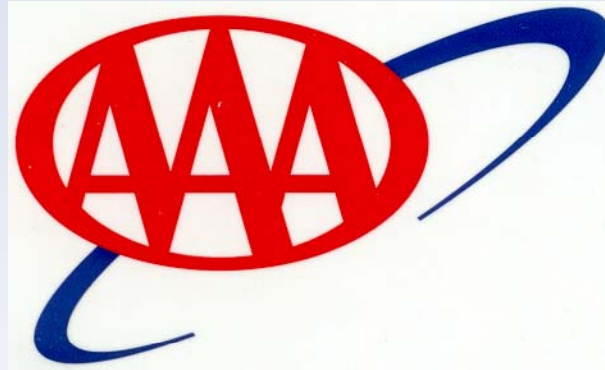


Other Campus Groups / Resources (cont.)

- Office of Campus Emergency Planning
 - Todd Short, Dir.
 - <http://www.ocep.illinois.edu/>
- Facilities & Services
 - <http://www.fs.uiuc.edu/>
- i-card
 - <http://www.icard.uillinois.edu/>
- CAM – Campus Administrative Manual
 - <http://www.fs.uiuc.edu/cam>



Traveler's Assistance



Accessibility Resources

- IITAA
 - Illinois Information Technology Accessibility Acts
 - <http://www.dhs.state.il.us/iitaa/>
- ITaccess
 - Information Technology Accessibility Initiative
 - Tim Offenstein, coordinator
 - <http://itaccessibility.illinois.edu/>



Accessibility Resources (cont.)

- CITA
 - Illinois Center for Information Technology and Web Accessibility
 - <http://www.cita.illinois.edu/>
- DRES
 - Disability Resources and Educational Services
 - Jon Gunderson, Coordinator of Assistive Communication & Information Technology
 - <http://www.disability.illinois.edu/>



The Fine Print: Policies

- <http://www.cio.illinois.edu/policies/>
 - [Appropriate Use Policy](#)
 - [Categories of authorized users](#)
 - [Information Security Policy](#)
 - [Web Privacy](#)
- [FERPA](#)
 - Family Educational Rights and Privacy Act
- [IITAA](#)
 - Illinois Information Technology Accessibility Act



Landscaping

- Data center consolidation
 - <http://wiki.cites.uiuc.edu/wiki/display/dcc/>
 - <http://wiki.cites.uiuc.edu/wiki/display/citesdcpub/>
- Server virtualization
 - <http://www.cites.illinois.edu/vmware/>
- Email/calendaring refresh
 - <http://illinois.edu/goto/emailcalendaring>
- my.illinois.edu
 - <http://my.illinois.edu/>
- Mobile device app development
- Microsoft CA
- Identity management
- Storage service



IT@Illinois

- Public website
 - <http://illinois.edu/goto/itatillinois>
- Private website
 - <http://wiki.cites.uiuc.edu/wiki/display/itatillinois/>
- Announcements list
 - https://listserv.illinois.edu/wa.cgi?SUBED1=IT_AT_ILLINOIS&A=1
- Review panel report and Provost/CIO response
 - <https://wiki.cites.uiuc.edu/wiki/display/itatillinois/Panel+Report+on+Concepts>



Thank You!

Questions?

Comments?

Corrections?

Additions?

